

# LADAKH

*Trip*

📍 Manali

📍 Leh

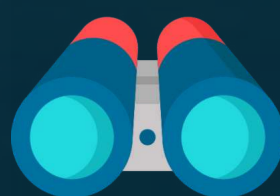
📍 Manali



Stay



Transport



SightSeeing



Dinner &  
Breakfast



Activities

**BOOK NOW:**  **9755216100**



## Greetings from HumTripWale

HumTripWale is a one-of-a-kind platform that connects people and adventures. We are for Camping, Night Trek, Ladakh, Spiti, Manali, Goa, Kashmir, River Rafting, Night Out, and so on. Our goal is to be a one-stop solution for all activities and adventure needs of people like us—those stuck in mundane routines looking for an adventure, those yearning for a life-changing experience but lacking the time to plan it, and even those unsure of what they want but willing to experiment! Not only do we create unique experiences that ensure that your once-in-a-lifetime adventure is worthwhile, but we also bring them to you at the best possible prices.



# BRIEF ITINERARY

**DAY 0**

— Departure From Delhi To Manali

**DAY 1**

— Manali Local Sightseeing- Overnight Stay At Manali.

**DAY 2**

— Manali to Sarchu- Overnight stay at Sarchu.

**DAY 3**

— Sarchu to Leh- Overnight stay at Leh.

**DAY 4**

— Visit Shanti stupa, Magnetic Hills and Pathar Sahib Gurudwara  
Overnight stay at Leh.

**DAY 5**

— Leh to Nubra Valley over Khardung La- Overnight stay at Diskit.

**DAY 6**

— Nubra Valley to Pangong Tso via Shyok valley - Overnight stay  
at Pangong Tso.

**DAY 7**

— Pangong Tso to Leh via Chang La - Overnight stay at Leh.

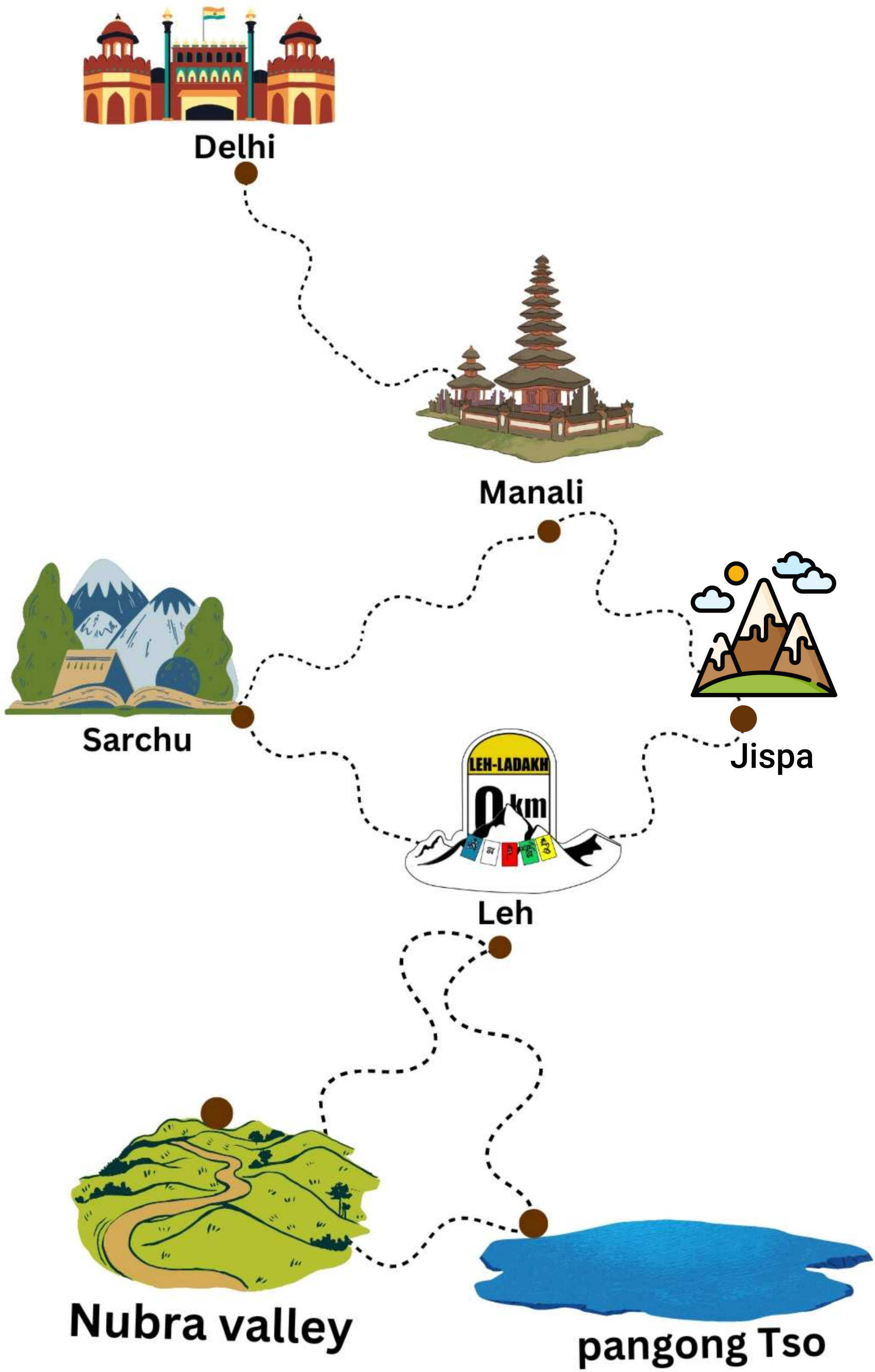
**DAY 8**

— Journey back to Manali- Overnight stay at Jispa

**DAY 9**

— Transfer from Jipsa to Manali - Departure from Manali to Delhi

# ROAD MAP



## DAY 0: DEPARTURE FROM DELHI TO MANALI

- We depart from Delhi around 6 PM in an AC Vehicle.



## DAY 1:- MANALI LOCAL SIGHTSEEING | OVERNIGHT STAY AT MANALI

- Check in to the hotel, freshen up & have breakfast.
- A short brief for the next day to start our trip further.
- We have kept this day for acclimatisation purposes.
- Later head-out for self-exploration of Manali - Like Vasishta Temple, Hidimba temple, Mall road, Jogini Waterfall.
- Come back to the Hotel, Overnight stay at the hotel.
- Call it an early night to rest and prepare for the upcoming adventures.



## DAY 2 :-MANALI TO SARCHU | OVERNIGHT STAY AT SARCHU

- Wake up early in the morning, have breakfast and check- out the hotel.
- Later start your much awaited Ladakh trip on the famous Leh Manali highway.
- We'll cross the Atal Tunnel to enter Lahaul Valley.
- We'll also cross Darcha, Baralacha Pass for the enormous | panoramic views.
- Reach Sarchu by evening.
- Overnight Stay in Sarchu under million stars.



## DAY 3: SARCHU TO LEH | OVERNIGHT STAY AT LEH

- After Breakfast at the campsite, head to Leh.
- Once you start , you will instantly be Greeted with Gata Loops(21 hairpin bends) at 4669m Enroute cross Nakee-La (4739m)and Lachung-La(5065m) just above Brandy bridge.
- After a Quick lunch at Pang, drive through the Moore Plains, which is a completely flattened straight road extending over 30km.
- On the Plains, one as a chance of spotting tiny colonies of Marmot's and the wild herds of Kyung-Yak.
- Later on, we'll cross Tanglang La (second highest pass of the world) to reach Leh.
- Overnight stay in Leh.



## DAY 4 :- VISIT SHANTI STUPA, MAGNETIC HILLS AND PATHAR SAHIB GURUDWARA | OVERNIGHT STAY AT LEH

- Wake up and have breakfast at the hotel.
- Post Breakfast head for the local sightseeing of Leh.
- Place to Visit- Shanti stupa, Zanskar & Indus Confluence, magnetic hills and Pathar Sahib Gurudwara.
- Evening free for leisure and acclimatisation.
- Come back to hotel by evening.
- Dinner & overnight stay.



## DAY 5:- LEH TO NUBRA VALLEY OVER KHARDUNG LA | OVERNIGHT STAY AT DISKIT.

- After breakfast , head to Nubra valley via Khardung La (Highest Motorable Road at 5359 mt.)
- Nubra Valley is popularly known as Ldorma or the valley of flowers. It is situated to the north of Ladakh between the Karakoram and Ladakh ranges of the Himalayas.
- Check in to the hotel and visit the Sand Dunes(Cold Deserts of India),take a camel safari(Self-Paid).
- Visit Monastery around, come back to hotel by evening.
- Dinner & Overnight stay.



## DAY 6 :- NUBRA VALLEY TO PANGONG TSO LAKE VIA SHYOK VALLEY | OVERNIGHT STAY AT PANGONG TSO

- After Breakfast check-out , start your journey to the famous Pangong Tso via Agam and Shyok villages.
- Pangong Tso which is perhaps one of the most amazing lake in Asia and its a high altitude alpine lake and is the most fascinating lake because it changes its color according to the surroundings. “Lake of the great hollow” is considered as the largest lake in Asia.
- Dinner and Overnight stay in Pangong.



## DAY 7 :- PANGONG TSO TO LEH VIA CHANG LA | OVERNIGHT STAY AT LEH

- Wake up early morning to witness a mesmerising sunrise.
- After having breakfast, head back to Leh.
- Enroute visit Chang-La, The 2nd highest motor-able road in the world at 5350 meter.
- Reach by evening time and self explore the local market/cafe's since it will be the last day in Leh. (At Your Own) Shop something for your friends/relatives back home.
- Come back to the hotel by evening.
- Dinner and overnight stay in Leh.





## DAY 8 :- JOURNEY BACK TO MANALI - OVERNIGHT STAY AT JISPA

Wake up, have breakfast bid farewell to the Leh City.

- Depart for Manali.
- Overnight Halt at Jispa
- Reach Jispa & Check in to the camps.



## DAY 9 : TRANSFER FROM JISPA TO MANALI - DEPARTURE FROM MANALI TO DELHI

- Wake up early in the morning & Post breakfast Depart for Manali.
- Reach Manali & Depart for Delhi by Evening.



---

# INCLUSIONS

---

## STAY

Stay for 8 nights - 1 night in a hotel at Manali, 1 night in camps at Sarchu, 3 nights in a hotel at Leh, 1 night in a hotel at Nubra Valley, 1 night in camps at Pangong Tso & 1 night in camps at Jispa on triple/quad sharing basis

## MEAL

A total of 15 meals - 1 meal Day 1 (B) + 1 meal Day 2 (D) + 2 meals Day 3 (B+D) + 2 meals Day 4 (B+D) + 2 meals Day 5 (B+D) + 2 meals Day 6 (B+D) + 2 meals Day 7 (B+D) + 2 meals Day 8 (B+D) + 1 meal Day 9 (B)

## OTHER INCLUSIONS

- ✓ Volvo transfer from Delhi to Manali & back.
- ✓ Bike Rent for 8 days - Manali to Manali (For Biking Option).
- ✓ Fuel for the bike(Manali to Manali) as per the itinerary.
- ✓ Entire travel from Manali to Manali by tempo traveler/cab (For Tempo Traveler Option)
- ✓ Mechanical Backup.
- ✓ All inner line permits for the trip.
- ✓ Driver Night Charges, Toll Tax, Parking Charges, etc.
- ✓ Team Captain throughout the trip.
- ✓ An Oxygen Cylinder 24x7 in the car in case of emergency.

---

# EXCLUSIONS

---

- ✗ GST (5%) is applicable extra.
- ✗ Any kind of food or beverage that is not included in the package like alcoholic drinks, mineral water, meals/refreshments/lunches on the highway.
- ✗ Any personal expenses like a tip to the drivers, entry to monuments/monasteries, camera/video camera charges, camel safari, river rafting, laundry, telephone bills, tips, etc
- ✗ Any cost arising due to natural calamities like landslides, roadblocks etc. (to be borne directly by the customer on the spot)
- ✗ Anything not mentioned in the inclusions.
- ✗ Any damage to the bike except engine damage must be borne by the client.

# TRIP PACKAGES

MODE OF TRANSPORT	PRICE
TEMPO TRAVELLER	<b>EARLY BIRD PRICE</b> <del>₹30,999/-PP</del> ₹25,999/-PP
RE Standard/Himalayan (Solo)	<b>EARLY BIRD PRICE</b> <del>₹49,999/-PP</del> ₹44,999/-PP
RE Standard/Himalayan (With Pillion)	<b>EARLY BIRD PRICE</b> <del>₹39,999/-PP</del> ₹34,999/-PP
SELF BIKE (SOLO)	<b>EARLY BIRD PRICE</b> <del>₹27,999/-PP</del> ₹22,999/-PP

**NOTE: 2500/- per person extra on double sharing**

**NOTE: 10,000/- needs to be submitted as security for the bike before the start of the trip. Any damage to the bike, except engine damage, has to be borne directly by the client.**

# PAYMENT PROCEDURE

Book your seats by depositing 10,000 Advance amount and rest you have to pay 15 days prior the departure of Trip.



paytm



At **9806116100**  
(Humphotowale Productions)

Or Scan & Pay Using PhonePe App



\*\*\*\*\*6100

## CANCELLATION POLICY

**NO REFUND SHALL BE MADE WITH RESPECT TO THE INITIAL BOOKING AMOUNT FOR ANY CANCELLATIONS. HOWEVER,**

1. If cancellations are made 30 days before the start date of the trip, 25% of the trip cost will be charged as cancellation fees.
2. If cancellations are made 15-30 days before the start date of the trip, 50% of the trip cost will be charged as cancellation fees.
3. If cancellations are made within 0-15 days before the start date of the trip, 100% of the trip cost will be charged as cancellation fees.
4. In the case of unforeseen weather conditions or government restrictions, certain activities may be canceled and in such cases, the operator will try his best to provide an alternate feasible activity. However, no refund will be provided for the same.

# CONTACT US



+91 9755216100



+91 9806116100



@HumTripWale



humtripwale@gmail.com

Follow us on



@HumTripWale

CHECK OUR REVIEWS

facebook



4.9/5.0

tripadvisor



5.0/5.0

Google



4.9/5.0

# TERMS & CONDITIONS

- Full Payment of the trip cost must be made before the trip begins. Pending Payments may eventually lead to the Cancellation of the trip.
- The IDs shall all be verified before boarding. No boarding shall be entertained without a valid Govt. ID.
- The Transfer of the bookings is not permitted. Only the names mentioned at the time of confirmation shall be allowed to travel.
- No refunds shall be made towards any inclusion(s) not availed by the Client.
- Travelers must take care of their luggage & belongings. The management shall not be responsible for any damage or any missing items along the tour.
- The time of Departure is stated & fixed. All travelers must update their status with the Trip coordinator(s), & report at the pickup point 30 mins prior to the scheduled departure.
- The Air Conditioning will be switched off in the hills. Also, during the trip, it shall be the Driver's discretion to put off the AC as & when required, considering the travelers' safety & ease of travel along uneven & dangerous routes.
- Our time of departure is fixed must depart by the stated time & keep their status updated with the trip coordinator(s). Anyone missing the bus shall not be eligible for any refunds. We shall call you twice before the schedule departure.
- Drinking & Smoking are strictly prohibited along the tour due to health & safety concerns. Our tours involve physically demanding activities such as trekking, camping at high altitudes and we recommend for you to be in the right shape to make most of them.
- HumTripWale is a modern travel community, organizes and arranges the adventure trip to the mountains which has the risk of accidents, loss of life, bodily injury, financial repercussions, etc. Neither the HumTripWale nor its agents or affiliated entities shall be responsible or liable for any accident, bodily injury, illness or death, loss or damage to baggage or property, or for any damages or claims whatsoever arising from loss (including loss of possessions and loss of enjoyment), negligence or delay from the act, error, omission default or negligence of any person not its direct employee or under its exclusive control.
- No act of misconduct or indiscipline shall be tolerated on the tours. We are a cordial travel community and we aspire to bring to you a hassle free and memorable experience. HumTripWale shall not be responsible for any delays or alterations in the program or indirectly incurred expenses in cases such as Natural Hazards, accident, breakdown of machinery, weather conditions, landslides, political closure or any untoward incidents.
- We do not provide any insurance policy to cover for the expenditure on sickness or accidents or losses incurred due to theft or other reasons.
- Numerous factors such as weather and road conditions the physical ability of participants etc. may bring alteration in the itinerary. We reserve the right to make necessary changes in the schedule in the interest of safety, comfort and general well-being!
- The photos/videos content created on HumTripWale's trip (by HumTripWale's content creators or clients) is the property of HumTripWale and can only be used by HumTripWale Experiences for advertising across media platforms. None of the digital content can be used by any one without obtaining the rightful permissions by HumTripWale.

---

# NOTES

---

Travellers residing outside Delhi are suggested to book trains/flights reaching Delhi not later than 2 PM on the trip start date. Similarly, on trip end date, book returning flight/trains leaving post 4 PM.

All the riders are required to wear a riding jacket (won't be provided by HumTripWale) at all the times they are riding the bike, else won't be permitted to ride the bike.

Numerous factors such as weather, road conditions, the physical ability of participants etc. May cause itinerary change. We reserve the rights to change any schedule in the interest of safety, comfort and general wellbeing.

The age limit of our group departures is 16 to 42 years due to the power packed itineraries that we provide to our travellers. We can customise trips for travellers beyond the mentioned age bracket.